

Natomas Unified School District

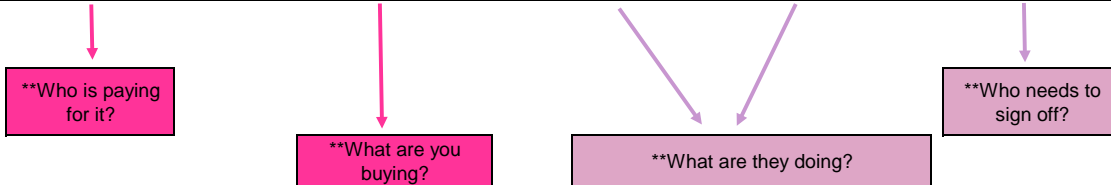


2021-2022

Chart of Accounts

SACS ACCOUNT CODING

FUND	RESOURCE	PROJECT YEAR	OBJECT	SITE	GOAL	FUNCTION	BUDGET RESPONSIBILITY (LOC 1)	TYPE (LOC 2)
(2 Digits)	(4 Digits)	(1 Digits)	(4 Digits)	(3 Digits)	(4 Digits)	(4 Digits)	(3 Digits)	(3 Digits)
XX	XXXX	X	XXXX	XXX	XXXX	XXXX	XXX	XXX



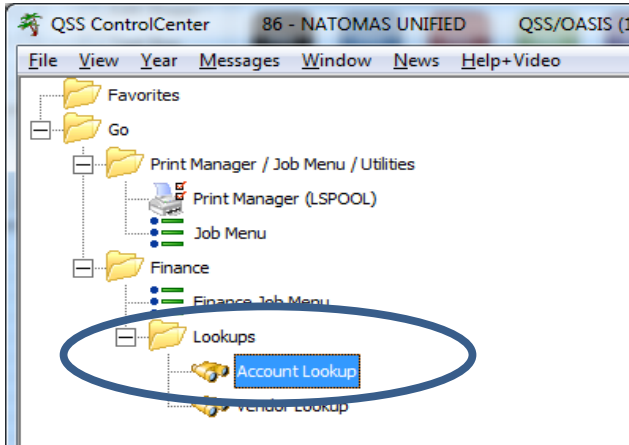
QCC "CHEAT SHEET"

FUND	RESOURCE	PROJECT YEAR	OBJECT	SITE	GOAL	FUNCTION	BUDGET RESP (LOC 1)	TYPE (LOC 2)
(2 Digits)	(4 Digits) XXXX	(1 Digits)	(4 Digits) XXXX	(3 Digits)	(4 Digits)	(4 Digits)	(3 Digits)	(3 Digits)
XX		X		XXX	XXXX	XXXX	XXX	XXX

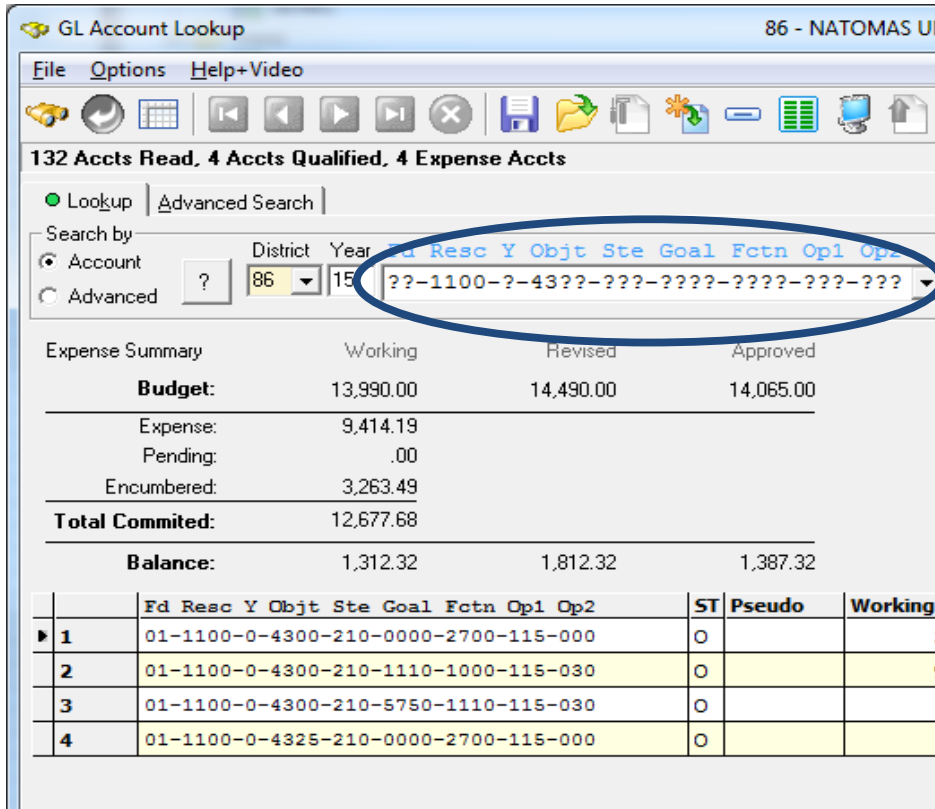
Above is the complete account. In order to facilitate identifying the account code, focus your efforts on what are you buying (Object) and who is paying for it (Resource).

If you use those 2 searches within QCC, you will greatly limit your search in QCC.

Go to Account Lookup module (see below)



Then put in your Object and Resource.



This will help you to limit the number of account codes, as well as indicate if there is enough budget or if you are in need of a budget transfer.

**NATOMAS UNIFIED SCHOOL DISTRICT
STATE ACCOUNT CODE FUND NUMBERS**

FUND DESCRIPTION	FUND	STATE REPORT NUMBER
MAIN OPERATING FUND		
GENERAL FUND	01	FORM01
SPECIAL REVENUE FUNDS		
STUDENT ACTIVITY SPECIAL REV	08	FORM08
CHARTER SCHOOL FUND (BY PROJECT YEAR)	09	FORM09
ADULT EDUCATION	11	FORM11
CHILD DEVELOPMENT (PRE-SCHOOL)	12	FORM12
FOOD SERVICES FUND	13	FORM13
RETIREE BENEFIT FUND (w/no Formal Trust)	20	FORM20
CAPITAL PROJECTS FUNDS		
BUILDING FUND (G.O.. & COP)	21	FORM21
CAPITAL FAC (DEV FEES)	25	FORM25
COUNTY SCHOOL BUILDING FUND	35	FORM35
SPEC RESERVE FOR CAP	40	FORM40
DEBT SERVICE FUNDS		
BOND INTEREST & REDEMPTION	51	FORM51
ENTERPRISE FUNDS		
CAFETERIA ENTERPRISE FUND	61	FORM61
OTHER ENTERPRISE FUND	63	FORM63
TRUST FUNDS		
SCHOLARSHIP FUND	73	FORM73

**NATOMAS UNIFIED SCHOOL DISTRICT
RESOURCES (Numerical)**

DESCRIPTION	RESOURCE
Charter Taxes in Lieu	0000
Developer Fees, Level 1	0000
LCFF / Unrestricted	0000
Gifted and Talented Education	0036
California Peer Assis & Review	0040
International Baccalaueate	0058
CTE	0063
International BaccalaureateMYP	0068
Annual Schools Start Up	0075
International Baccalaureate PY	0088
Teacher Induction	0090
AFTER SCHOOL PROGRAMS	0104
One Time Money	0200
AP Capstone	0415
MAA Unrestricted	0470
Economic Impact Aid	0710
Transportation	0720
Transportation-Other	0722
Supplemental	0740
EDUC PROTECTION ACCOUNT	1400
ESSA:TL I BSC GR LOW INC/NEGLE	3010
Comprehensive Support & Improvement (CSI)	3182
ESSER Funds	3210
ESSER II FUNDS	3212
ESSER III 80%	3213
ESSER III LEARNING LOSS 20%	3214
EMERG ED RELIEF:LEARN LOSS	3215
SP ED-BASIC GRT ENT PL94-142	3310
SP ED-PRSCH ENT NON RIS	3315
SE IDEA MENTAL HEALTH ALLOCATN	3327
SP ED-PRSCH STAFF DEVELOPMENT	3345
SP ED-EARLY INTERVENTION GRNTS	3385
VOC PGM-VOC & APPL SEC & ADULT	3550
ESSA:TITLE II,A TEACHER QUALIT	4035
ESSA:TITLE IV PART A	4127
ESSA:TITLE III IMMIGR STDNT PR	4201
ESSA:TITLE III-LIMITED ENGLISH	4203
COVID Response/Relief Supp	5058
CHILD NUTRITION-SCHOOL PROGRAM	5310
Child Nutrition-Catering	5321
SUMMER FOOD SERV OPER FOR CHLD	5330

**NATOMAS UNIFIED SCHOOL DISTRICT
RESOURCES (Numerical)**

DESCRIPTION	RESOURCE
HOMELESS CHILDREN EDUC GRANTS	5630
AMERICAN RESCUE PLAN - HOMELESS I PROGRAM	5632
MEDI-CAL BILLING OPTION	5640
After School Ed and Safety	6010
Child Dev:CA State Presch Prog	6105
CHILD DVLPMT:QRIS BLOCK GRANT	6127
LOTTERY INSTRUCTIONAL	6300
Career Tech Ed Incent Grant	6387
K-12 STRONG WORKFORCE PROGRAM	6388
ADULT EDUCATION PROGRAM AB86	6391
SPECIAL EDUCATION	6500
SPEC ED-PROJECT WORKABILITY I	6520
STATE MENTAL HEALTH SERVICES	6546
CLASS SCHOOL EMP PROF BLK GRNT	7311
COVIN-19 RESPONSE FD CLEAN/EQ	7388
INPERSON INSTRUCTION ALLOCATIN	7422
EXPANDED LEARNING OPPORTUNITIS	7425
EXPAND LEARNING FOR PARA	7426
STRS ON-BEHALF PENS. CONTRIB.	7690
ONGOING & MAJOR MAINT. ACCOUNT	8150
OTHER LOCAL	9010
CHILD CARE FACILITES	9200
Developer Fees, Level 2	9303
DONATIONS	9305
First Five-CCFC	9340
GO Bond #3	9359
GO Bond #4	9360
Library Fees Collected	9449
PTA DONATIONS	9710
SCHOLARSHIPS	9835
MENTAL HEALTH SVC ACT	9841

**NATOMAS UNIFIED SCHOOL DISTRICT
RESOURCES (Alpha)**

DESCRIPTION	RESOURCE
ADULT EDUCATION PROGRAM AB86	6391
After School Ed and Safety	6010
AFTER SCHOOL PROGRAMS	0104
AMERICAN RESCUE PLAN - HOMELESS I PROGRAM	5632
Annual Schools Start Up	0075
AP Capstone	0415
California Peer Assis & Review	0040
Career Tech Ed Incent Grant	6387
Charter Taxes in Lieu	0000
CHILD CARE FACILITES	9200
Child Dev:CA State Presch Prog	6105
CHILD DVLPMT:QRIS BLOCK GRANT	6127
Child Nutrition-Catering	5321
CHILD NUTRITION-SCHOOL PROGRAM	5310
CLASS SCHOOL EMP PROF BLK GRNT	7311
Comprehensive Support & Improvement (CSI)	3182
COVID Response/Relief Supp	5058
COVIN-19 RESPONSE FD CLEAN/EQ	7388
CTE	0063
Developer Fees, Level 1	0000
Developer Fees, Level 2	9303
DONATIONS	9305
Economic Impact Aid	0710
EDUC PROTECTION ACCOUNT	1400
EMERG ED RELIEF:LEARN LOSS	3215
ESSA:TITLE II,A TEACHER QUALIT	4035
ESSA:TITLE III IMMIGR STDNT PR	4201
ESSA:TITLE III-LIMITED ENGLISH	4203
ESSA:TITLE IV PART A	4127
ESSA:TL I BSC GR LOW INC/NEGLE	3010
ESSER Funds	3210
ESSER II FUNDS	3212
ESSER III 80%	3213
ESSER III LEARNING LOSS 20%	3214
EXPAND LEARNING FOR PARA	7426
EXPANDED LEARNING OPPORTUNITIS	7425
First Five-CCFC	9340
Gifted and Talented Education	0036
GO Bond #3	9359
GO Bond #4	9360

**NATOMAS UNIFIED SCHOOL DISTRICT
RESOURCES (Alpha)**

DESCRIPTION	RESOURCE
HOMELESS CHILDREN EDUC GRANTS	5630
INPERSON INSTRUCTION ALLOCATIN	7422
International Baccalaueate	0058
International Baccalaureate PY	0088
International BaccalaureateMYP	0068
K-12 STRONG WORKFORCE PROGRAM	6388
LCFF / Unrestricted	0000
Library Fees Collected	9449
LOTTERY INSTRUCTIONAL	6300
MAA Unrestricted	0470
MEDI-CAL BILLING OPTION	5640
MENTAL HEALTH SVC ACT	9841
One Time Money	0200
ONGOING & MAJOR MAINT. ACCOUNT	8150
OTHER LOCAL	9010
PTA DONATIONS	9710
SCHOLARSHIPS	9835
SE IDEA MENTAL HEALTH ALLOCATN	3327
SP ED-BASIC GRT ENT PL94-142	3310
SP ED-EARLY INTERVENTION GRNTS	3385
SP ED-PRSCH ENT NON RIS	3315
SP ED-PRSCH STAFF DEVELOPMENT	3345
SPEC ED-PROJECT WORKABILITY I	6520
SPECIAL EDUCATION	6500
STATE MENTAL HEALTH SERVICES	6546
STRS ON-BEHALF PENS. CONTRIB.	7690
SUMMER FOOD SERV OPER FOR CHLD	5330
Supplemental	0740
Teacher Induction	0090
Transportation	0720
Transportation-Other	0722
VOC PGM-VOC & APPL SEC & ADULT	3550

**NATOMAS UNIFIED SCHOOL DISTRICT
PROJECT YEAR**

CODE	DESCRIPTION
0	District
3	LGA, FD 09
6	WC, FD 09
7	NP3-HS, FD 09
8	NP3-MS, FD 09
9	NP3-ES, FD 09

**NATOMAS UNIFIED SCHOOL DISTRICT
OBJECT CODES**

OBJECT DESCRIPTION	OBJECT CODE	TYPE CODE
<u>CERTIFICATED PERSONNEL CLASSIFICATION</u>	<u>1xxx</u>	
TEACHER SALARIES	1100	100
CERTIFICATED PUPIL SUPPORT (i.e. Counselors / Psychologists)	1200	100
CERTIFICATED ADMINISTRATORS	1300	300
OTHER CERTIFICATED SALARIES (i.e. Speech Therapists)	1900	100
STIPEND	1x02	102
EXTRA HOURS / EXTRA ASSIGNMENTS	1x03	103
SUBSTITUTES	1x04	104
EXCESS CLASS SIZE / OVERAGES	1x03	108

Teacher Sick / Absence or Vacancy acct code
01-0000-0-1104-000-1110-1000-000-104

Teacher Sub Tree
01-0000-0-1103-000-1110-1000-000-103

****NOTE: Timesheets that are submitted without an account code will be charged to site discretionary funds. Please work with your District Administration and/or Budget Analyst to determine the appropriate account code prior to submission of the timesheet to payroll.**

<u>CLASSIFIED PERSONNEL SALARY CLASSIFICATION</u>	<u>2xxx</u>	
INSTRUCTIONAL SUPPORT SALARIES (i.e. Instructional Assistants)	2100	200
CLASSIFIED SUPPORT SALARIES (i.e. Technology)	2200	200
CLASSIFIED ADMINISTRATORS	2300	400
CLERICAL & OFFICE SALARIES	2400	200 / 500
OTHER CLASSIFIED SALARIES (i.e. Playground Assistants)	2900	200 / 700
OVERTIME	2x01	201
STIPEND	2x02	202
EXTRA HOURS (Prior to 16-17 : 2x05)	2x03	203
SUBSTITUTES	2x04	204
OUT OF CLASS PAY (OCP)	2x07	207
VACATION	2x09	209
BOARD	2302	600

****NOTE: Timesheets that are submitted without an account code will be charged to site discretionary funds. Please work with your District Administration and/or Budget Analyst to determine the appropriate account code prior to submission of the timesheet to payroll.**

**NATOMAS UNIFIED SCHOOL DISTRICT
OBJECT CODES**

OBJECT DESCRIPTION	OBJECT CODE	TYPE CODE
EMPLOYEE BENEFITS CLASSIFICATION		
Please contact your Accounting & Budget Analysts for any benefit object codes		3XXX
<u>BOOKS AND SUPPLIES CLASSIFICATION</u>		
	4000-4999	
TEXTBOOKS	4100	
TYPE I TEXTBOOKS	4105	
BOOKS OTHER THAN TEXTBOOKS	4200	
MATERIALS & SUPPLIES		
(Total cost under \$500 includes tax, shipping etc.)		
GENERAL	4300	
COMPUTER SUPPLIES	4310	
MEETINGS	4325	
FUEL / OIL	4340	
MAINT OF EQUIP/ BLDG / VEHICLES / GROUNDS	4350	
SUPPLIES TO BE ALLOCATED	4399	
INVENTORIED SUPPLIES (\$500 to \$4,999)		
GENERAL	4400	
COMPUTER SUPPLIES	4410	
FOOD (USED ONLY FOR FOOD SERVICES)		
FOOD SUPPLIES	4700	
FOOD SUPPLIES (STATE COMMODITIES)	4710	
<u>SERVICES AND OTHER OPERATING EXPENDITURES CLASSIFICATION</u>		
	5000-5999	
SUB-CONTRACTS FOR SERVICES (PASS-THROUGH SERVICES TO OTHER GOVT. / NON-PROFIT AGENCY)	5100	
SUB-CONTRACTS FOR SERVICES - NON PUBLIC SCHOOLS	5103	
TRAVEL AND CONFERENCE		
HOTELS, CONFERENCE FEES, AIRFARE/TRAVEL, TOLL, PARKING, MEALS, ASSOCIATED MILEAGE	5200	
LOCAL MILEAGE ONLY	5210	
DUES, MEMBERSHIPS, & SUBSCRIPTIONS	5300	
INSURANCE		
PROPERTY & LIABILITY	5400	
FLOOD	5410	
OTHER INSURANCE	5450	

**NATOMAS UNIFIED SCHOOL DISTRICT
OBJECT CODES**

OBJECT DESCRIPTION	OBJECT CODE	TYPE CODE
UTILITIES		
ELECTRICITY	5510	
GAS	5515	
WATER	5520	
WASTE DISPOSAL	5525	
PEST CONTROL	5535	
ALARM SERVICE	5540	
SEWER	5550	
STORM DRAINAGE	5555	
RENTALS, LEASES, REPAIRS		
RENTALS	5600	
LEASES	5620	
AIR CONDITIONING REPAIRS	5625	
RENT or LEASE-BLDGS / CLASSROOMS	5630	
VEHICLE REPAIRS	5635	
BUS REPAIRS	5640	
DIRECT COST for TRANSFER of <u>INTRAFUND SERVICES</u> (Same Fund)		
TRANSPORTATION-FIELD TRIPS	5710	
TRANSPORTATION-ATHLETIC TRIPS	5719	
FOOD SERVICE (INTERNAL USE ONLY-FUND 13)	5713	
PRINT SHOP	5725	
TRANSPORTATION SVC- DIRECT COST (WORK ORDERS)	5743	
DIRECT COSTS for <u>INTERFUND SERVICES</u> (Between Funds)		
CHARTER MOU FEES	5750	
FOOD SERVICES	5753	
TRANSPORTATION-FIELD TRIPS	5756	
MAINTENANCE	5758	
TRANSPORTATION-ATHLETIC TRIPS	5759	
PROFESSIONAL/ CONSULTING SERVICES & OPERATING EXPENSES		
CONSULTANTS	5800	
DELIVERY SERVICES	5800	
PARENT TRANSPORTATION	5800	
NON-PUBLIC SCHOOL BASIC TUITION	5803	
ADVERTISEMENT	5810	
AUDIT FEES	5815	
BUS DRIVER CERTIFICATE RENEWAL	5820	
CONTRACTS / COUNTY	5835	
COPIER SERVICE CONTRACTS	5840	
ELECTION COSTS	5850	
EMPLOYEE AWARDS	5855	
EMPLOYEE PHYSICALS / TB	5860	
FIELD TRIP	5865	
FINGERPRINTING	5870	
HEALTH DEPT PERMITS	5871	
LEGAL ADVERTISEMENT	5875	
LEGAL FEES	5880	
LICENSING SOFTWARE	5882	
PARENT MILEAGE - SPECIAL EDUCATION	5890	
CONTRACTED SERVICES - UNALLOCATED	5899	

**NATOMAS UNIFIED SCHOOL DISTRICT
OBJECT CODES**

OBJECT DESCRIPTION	OBJECT CODE	TYPE CODE
COMMUNICATIONS		
COMMUNICATIONS - OFFICE PHONES	5900	
COMMUNICATIONS - CELL PHONES	5910	
COMMUNICATIONS - POSTAGE	5920	
WIRELESS SERVICES	5935	
CAPITAL OUTLAY CLASSIFICATION		
	6000-6999	
LAND		
PURCHASE OF SITE	6100	
APPRAISALS	6110	
ESCROW COSTS	6120	
SURVEY	6130	
SUPPORT COSTS	6140	
RELOCATION ASSISTANCE	6150	
SITE HAZARDOUS MATERIAL	6155	
OTHER COSTS	6160	
SITE CONSTRUCTION	6170	
BUILDING and IMPROVEMENT OF BUILDINGS		
LEASE / PURCHASE RELOCATABLE PORTABLES	6200	
ARCHITECT FEES	6210	
BUILDING AND PLAN DSA CHECK FEE	6215	
CDE PLAN CHECK FEES	6220	
ENERGY ANALYSIS FEE	6230	
PRELIMINARY TEST	6235	
OTHER COSTS - PLANNING	6240	
PERMANENT CONSTRUCTION	6250	
CONSTRUCTION MANAGEMENT FEES	6270	
INTERIM HOUSING	6272	
DEMOLITION	6273	
LABOR COMPLIANCE	6274	
OTHER CONSTRUCTION	6275	
CONSTRUCTION TESTING	6276	
INSPECTION	6280	
PROJECT CONTINGENCY	6290	
	6298	
BOOKS & MEDIA FOR NEW SCHOOL LIBRARIES		
	6300	
FURNITURE & EQUIPMENT (\$5,000 OR GREATER)		
COMPUTERS	6400	
	6410	
EQUIPMENT REPLACEMENT		
	6500	

**NATOMAS UNIFIED SCHOOL DISTRICT
OBJECT CODES**

OBJECT DESCRIPTION	OBJECT CODE	TYPE CODE
<u>OTHER OUTGO CLASSIFICATION</u>	<u>7000-7499</u>	
TUITION	7100-7199	
STATE SPECIAL SCHOOLS	7130	
OTH TUIT,EXC CST PMT TO DIST	7141	
OTH TUIT,EXC CST PMT TO COE	7142	
INTERAGENCY TRANSFERS OUT	7200-7299	
OTHER TRSF TO COE	7282	
ALL OTHER TRANSFERS OUT	7299	
TRANSFERS OF INDIRECT COSTS	7300-7399	
TRANSFERS OF INDIRECT COSTS	7310	
TRANSFERS OF INDIRECT COSTS - INTERFUND	7350	
DEBIT SERVICE		
INTEREST ON OTHER DEBT SERVICE	7438	
OTHER DEBT SERVICE PRINCIPAL	7439	
 <u>OTHER FINANCING USES</u>	 <u>7600-7699</u>	
INTERFUND TRANSFERS OUT		
INT-FD TF FR GENERAL TO CAFETERIA FUND (Balance to 8916)	7616	
OTHER AUTH INTERFUND TF OUT (Balance to 8919 - Other transfers in)	7619	
 <u>REVENUES</u>	 <u>8000-8999</u>	
LCFF SOURCES	8010-8099	
PRINCIPAL APPORTIONMENT	8010-8019	
LCFF STATE AID-CURR YEAR	8011	
EDUCATION PROTECTION ACCT	8012	
REV LIMIT STATE AID-PRIOR YEAR	8019	
PROPERTY TAXES		
HOMEOWNERS' EXEMPTION	8021	
TIMBER TAX	8022	
SECURED TAX ROLLS	8041	
UNSECURED ROLL TAXES	8042	
PRIOR YEARS TAXES	8043	
SUPPLEMENTAL TAXES	8044	
EDUC REV AUGMENTATION FUND	8045	
COMMUNITY DEVELOPMENT	8047	
OTHER IN-LIEU TAXES	8082	
LESS: NON-LCFF (50%) ADJUSTMENT	8089	
CHARTER TAXES IN LIEU	8096	
PROPERTY TAXES TRANSFERS	8097	
 FEDERAL REVENUE	 8100-8299	
SPEC EDUC-ENT PER UDC	8181	
SPEC EDUC-DISCRETIONARY GRANTS	8182	
CHILD NUTRITION PROGRAMS- FEDERAL	8220	
ALL OTHER FEDERAL REVENUES	8290	
 OTHER STATE	 8300-8599	
OTHER STATE APPORT-CURR YEAR	8311	
OTHER STATE APPORT-PRIOR YEAR	8319	
CHILD NUTRITION PROGRAMS- STATE	8520	
MANDATED COST REIMBURSEMENTS	8550	
STATE LOTTERY REVENUE	8560	
ALL OTHER STATE REVENUES	8590	

**NATOMAS UNIFIED SCHOOL DISTRICT
OBJECT CODES**

OBJECT DESCRIPTION	OBJECT CODE	TYPE CODE
OTHER LOCAL REVENUE	8600-8799	
SALE OF EQUIPMENT/SUPPLIES	8631	
FOOD SERVICE SALES	8634	
FACILITIES LEASES & RENTALS	8650	
INTEREST	8660	
INTERAGENCY SERV BETWN LEA'S	8677	
MITIGATION/DEVELOPER FEES- RESIDENTIAL	8681	
DEVELOPER FEES - COMMERCIAL	8682	
PLUS: MISC FUNDS NON-LCFF (50%) ADJUSTMENT	8691	
ALL OTHER LOCAL REVENUES	8699	
TRSF FROM COUNTY OFFICE	8782	
TF OF APPORT FROM COE	8792	
TRSF OF PRIOR YR APPORT	8794	
TRSF OF PROGRAM SPECIALIST	8795	
OTHER FINANCING SOURCES (TRANSFERS IN/CONTRIBUTIONS)	8900-8999	
INTFD TF TO DEVELOPER FEES FROM OTHERS	8913	
INTFD TF TO CAFETERIA FR GEN	8916	
OTHER AUTH INTERFUND TF IN	8919	
PROCEEDS FROM SALE OF BONDS	8951	
PROCEEDS FROM COPS	8971	
PROCEEDS FROM CAPITAL LEASES	8972	
ALL OTHER FINANCING SOURCES	8979	
CONTRIBUTIONS FR UNRESTR REV	8980	
CONTRIBUTION FROM UNRESTRICTED	8981	
CONTRIBT FROM MILLER UNRUH	8982	
Special Ed ADA Contribution	8983	
LCFF TRANSFER	8985	
EPA TRANSFER	8986	
CONTRIBUTIONS FROM REST REV	8990	
CATEGORICAL EDUC BLOCK GRANTS	8995	
BALANCE SHEET ACCOUNTS CLASSIFICATION		
ASSETS		
CASH IN COUNTY TREASURY	9110	
CASH IN BANK	9120	
Cash in Bank/Charter School	9121	
REVOLVING CASH ACCOUNT	9130	
CASH W/ FISCAL AGENT	9135	
CASH COLLECTIONS AWAITING DEP	9140	
INVESTMENTS	9150	
ACCOUNTS RECEIVABLE - PRIOR YR	9200	
A/R - SET UP	9205	
A/R - Advances	9210	
A/R AR-MODULE	9225	
COBRA CLEARING/RECEIVABLE	9254	
DUE FROM OTHER GOVERNMENTS	9290	
Due From Other Gov Agencies	9295	
DUE FROM OTHER FUNDS (Year open)	9310	
DUE FROM OTHER FUNDS - (Year close)	9319	
STORES	9320	
PREPAID EXPENDITURES	9330	
PREPAID EXPENSES - PRIOR YR	9335	
OTHER CURRENT ASSETS	9340	

**NATOMAS UNIFIED SCHOOL DISTRICT
OBJECT CODES**

OBJECT DESCRIPTION	OBJECT CODE	TYPE CODE
FIXED ASSETS		
LAND	9410	
IMPROVEMENT SITES	9420	
ACCUMULATED DEPREC-LAND IMPROV	9425	
BUILDINGS	9430	
ACCUMULATED DEPREC-BLDG	9435	
EQUIPMENT	9440	
ACCUMULATED DEPREC-EQUIPMENT	9445	
WORK IN PROGRESS	9450	
LIABILITES		
ACCOUNTS PAYABLE - PRIOR YR	9500	
ACCOUNTS PAYABLE- SET UP	9505	
PAYROLL ACCRUAL	9510	
RETIREE BENEFITS	9511	
CSESAP	9512	
MEDICAL DEFERRED (PY 1; PERS PLANS)	9540	
MEDICAL DEFERRED (PY 3; WHA)	9540	
MEDICAL DEFERRED (PY 5; KAISER)	9540	
DELTA DENTAL DEFERRED	9541	
VSP DEFERRED	9542	
EMPLOYER STRS LIABILITY	9551	
EMPLOYER PERS LIABILITY	9552	
EMPLOYER OASDI LIABILITY	9553	
EMPLOYER MEDICARE	9554	
EMPLOYER HEALTH & WELFARE LIAB	9555	
EMPLOYER ST UNEMPLOYMENT LIAB	9556	
EMPLOYERS WORKERS COMPENSATION	9557	
EMPLOYERS PERS BUYOUT LIABILITY	9558	
MISC DEDUCTION	9559	
SALES TAX OUT OF STATE	9560	
RETIREE OBLIGATIONS	9565	
OTHER CURRENT LIABILITIES	9570	
DEFERRED PAYMENT	9580	
DUE TO OTHER GOVERNMENTS	9590	
STRS EXCESS REFUND	9592	
DUE TO OTHER GOV-SET UP	9595	
DUE TO OTHER FUNDS	9610	
STORES - DUE TO OTHER FUNDS	9612	
DUE TO OTHER FUNDS - SET UP	9619	
CURRENT LOANS (TRANS)	9640	
UNEARNED REVENUE	9650	
LONG TERM LIABILITIES		
GENERAL OBLIGATION BND PAYABLE	9661	
STATE SCHOOL BUILDING LOAN	9662	
NET OPEB LIABILITY	9664	
COMPENSATED ABSENCES PAYABLE	9665	
COPS PAYABLE	9666	
CAPITAL LEASES PAYABLE	9667	
OTHER GENERAL LONG-TERM DEBT	9669	

**NATOMAS UNIFIED SCHOOL DISTRICT
OBJECT CODES**

OBJECT DESCRIPTION	OBJECT CODE	TYPE CODE
FUND BALANCE		
RESERVE FOR NONEXPENDABLE ASST	9710	
FUND BAL-RES FOR REV CASH	9711	
FUND BAL-RES FOR STORES	9712	
RES FOR PREPAD EXPENSES	9713	
RESERVE FOR ALL OTHER	9719	
FUND BAL-RES FOR ENCUMBRANCES	9720	
FUND BAL-GENERAL RESERVE	9730	
FUND BAL-LEGALLY RESTRICTED	9740	
FUND BAL-AB602 SELPA-LEGALLY R	9742	
FUND BALANCE/CAPITAL RESERVES	9745	
A/R RESERVE FOR SETUP RECEIVAB	9750	
FUND BAL-DESIG ECON UNCERT	9770	
FUND BAL-OTHER DESIGNATIONS	9780	
MODERNIZATION	9781	
DATA PROCESSING RESERVES	9782	
PERS LIABILITY	9783	
FUND BAL-UNDESIG/UNAPPROP	9790	
FUND BAL-BEGINNING BALANCE	9791	
FUND BAL-AUDIT ADJUSTMENTS	9793	
FUND BAL-OTHER RESTATEMENTS	9795	
NON OPERATING ACCOUNTS		
ESTIMATED REVENUES	9810	
EST OTHER FINANCING SOURCES	9815	
APPROPRIATIONS	9820	
EST OTHER FINANCING USES	9825	
ENCUMBRANCES	9830	
REVENUES	9840	
OTHER FINANCING SOURCES	9845	
EXPENDITURES	9850	
OTHER FINANCING USES	9855	
SUSPENSE CLEARING	9910	
SUSPENSE ACCOUNT	9911	
SUSPENSE A/R CLEARING ACCT	9912	
STRS/PERS PENALTIES AND INTEREST	9913	
AMOUNT AVAILABLE	9980	
AMOUNT TO BE PROVIDED	9989	
INVESTMENT IN GEN FIXED ASSETS	9990	

NATOMAS UNIFIED SCHOOL DISTRICT SCHOOL CODES

SITE	DESCRIPTION
000	District Wide
125	Food Services (Central Kitchen)
Elementary Schools	
210	American Lakes School (K-8)
220	Bannon Creek School (K-8)
230	Jefferson School (K-8)
240	Natomas Park Elementary School
250	Two Rivers Elementary School
260	Witter Ranch Elementary School
270	Paso Verde School (K-8)
280	Heron School (K-8)
300	H. Allen Hight Elementary
350	Virtual Academy K-8
Middle Schools	
620	Natomas Middle School
High Schools	
710	Natomas High School
720	Inderkum High School
760	Discovery High School
Charter Schools	
850	Charter Site (District Employee/Expense)
853	Leroy Greene Academy
855	Westlake Charter School
856	Natomas Pacific Pathways Prep-High School
858	Natomas Pacific Pathways Prep- Middle School
859	Natomas Pacific Pathways Prep- Elementary School
Adult Schools	
860	Natomas Adult School

**NATOMAS UNIFIED SCHOOL DISTRICT
GOALS (NUMERICAL)**

CODE	DESCRIPTION
0000	UNDESIGNATED
0001	GENERAL EDUCATION PRE-K
1110	K-12 GENERAL EDUCATION
1115	TRANSITIONAL KINDERGARTEN
1130	K-6 GENERAL EDUCATION
1145	7-12 GENERAL EDUCATION
1150	9-12 GENERAL EDUCATION
1205	ADVANCE PLACEMENT
1230	FINE ART
1240	ATHLETICS
1356	ENGLISH AS A SECOND LANGUAGE
1405	GRADUATION
1422	HOMELESS
1430	HOME & HOSPITAL
1490	LIBRARY
1500	MATH
1520	MUSIC
1550	PHYSICAL EDUCATION
1598	SATURDAY SCHOOL
1600	SCIENCE
1655	SOCIAL STUDIES
1658	SPECIAL PROJECTS
1695	PROFESSIONAL DEVELOPMENT
1720	SUMMER SCHOOL
1775	INTERVENTION
3200	CONTINUATION SCHOOLS
3800	VOCATIONAL EDUCATION
4110	ADULT EDUCATION
4760	BILINGUAL
5001	SPECIAL EDUCATION - UNSPECIFIED
5011	PRE-REFERAL TO MENTAL HEALTH
5730	SPECIAL EDUCATION - PRESCHOOL STUDENTS
5752	SEVERE - LOW INCIDENCE
5760	SPECIAL EDUCATION, Ages 5-22
6000	ROC/P
7110	NONAGENCY - EDUCATIONAL

**NATOMAS UNIFIED SCHOOL DISTRICT
GOALS (NUMERICAL)**

CODE	DESCRIPTION
8100	COMMUNITY SERVICES
8500	CHILD CARE AND DEV. SERVICES
9070	ASBESTOS
9090	AUDIO VISUAL
9181	ELECTRICAL
9223	FLOORING
9230	FOOD SERVICES SUMMER SCHOOL
9265	HVAC
9410	LEAD TESTING
9511	PHONE SYSTEM
9525	PAINTING
9527	PLUMBING
9528	PAVING
9585	REROOFING
9670	TECHNOLOGY
9685	THEFT / VANDALISM (use 8200 function)

**NATOMAS UNIFIED SCHOOL DISTRICT
GOALS (ALPHA)**

CODE	DESCRIPTION
1145	7-12 GENERAL EDUCATION
1150	9-12 GENERAL EDUCATION
4110	ADULT EDUCATION
1205	ADVANCE PLACEMENT
9070	ASBESTOS
1240	ATHLETICS
9090	AUDIO VISUAL
4760	BILINGUAL
8500	CHILD CARE AND DEV. SERVICES
8100	COMMUNITY SERVICES
3200	CONTINUATION SCHOOLS
9181	ELECTRICAL
1356	ENGLISH AS A SECOND LANGUAGE
1230	FINE ART
9223	FLOORING
9230	FOOD SERVICES SUMMER SCHOOL
0001	GENERAL EDUCATION PRE-K
1405	GRADUATION
1430	HOME & HOSPITAL
1422	HOMELESS
9265	HVAC
1775	INTERVENTION
1110	K-12 GENERAL EDUCATION
1130	K-6 GENERAL EDUCATION
9410	LEAD TESTING
1490	LIBRARY
1500	MATH
1520	MUSIC
7110	NONAGENCY - EDUCATIONAL
9525	PAINTING
9528	PAVING
9511	PHONE SYSTEM
1550	PHYSICAL EDUCATION
9527	PLUMBING
5011	PRE-REFERAL TO MENTAL HEALTH
1695	PROFESSIONAL DEVELOPMENT

**NATOMAS UNIFIED SCHOOL DISTRICT
GOALS (ALPHA)**

CODE	DESCRIPTION
9585	REROOFING
6000	ROC/P
1598	SATURDAY SCHOOL
1600	SCIENCE
5752	SEVERE - LOW INCIDENCE
1655	SOCIAL STUDIES
5730	SPECIAL EDUCATION - PRESCHOOL STUDENTS
5001	SPECIAL EDUCATION - UNSPECIFIED
5760	SPECIAL EDUCATION, Ages 5-22
1658	SPECIAL PROJECTS
1720	SUMMER SCHOOL
9670	TECHNOLOGY
9685	THEFT / VANDALISM (use 8200 function)
1115	TRANSITIONAL KINDERGARTEN
0000	UNDESIGNATED

**NATOMAS UNIFIED SCHOOL DISTRICT
FUNCTION (NUMERICAL)**

CODE	DESCRIPTION
0000	REVENUES, BALANCE SHEET
1000	INSTRUCTION - CLASSROOM
1050	FIELD TRIPS
1110	SPECIAL EDUCATION: SEPARATE CLASSES (SDC)
1120	SPECIAL EDUCATION: RESOURCE SPECIALIST INSTRUCTION (RSP)
1130	SPECIAL EDUCATION: SUPPLEMENTAL AIDS & SERV IN REG CLASS
1180	NON-PUBLIC SCHOOLS
1181	NON-PUBLIC AGENCIES
1190	SPECIAL EDUCATION: OTHER SPECIALIZED (I.E. SPEECH, THERAPIST, SPECIALISTS)
2100	SUPERVISION OF INSTRUCTION
2110	INSTRUCTIONAL SUPERVISION
2120	INSTRUCTIONAL RESEARCH
2130	CURRICULUM DEVELOPMENT
2140	INSTRUCTIONAL STAFF DEVELOPMENT
2420	INSTRUCTIONAL LIBRARY, MEDIA, AND TECHNOLOGY
2490	OTHER INSTRUCTIONAL RESOURCES
2495	PARENT PARTICIPATION
2700	SCHOOL ADMINISTRATION
3110	GUIDANCE AND COUNSELING SERVICES
3120	PSYCHOLOGICAL SERVICES
3130	CHILD WELFARE AND ATTENDANCE
3140	HEALTH SERVICES
3160	PUPIL TESTING
3600	PUPIL TRANSPORTATION
3700	FOOD SERVICES
3900	OTHER PUPIL SERVICES (I.E. ATTENDANCE CENTER)
4100	SCHOOL SPONSORED CO-CURRICULAR
4200	SCHOOL SPONSORED ATHLETICS
4900	OTHER ANCILLARY SERVICES
5000	COMMUNITY SERVICES
5900	OTHER COMMUNITY SERVICES
7110	BOARD
7120	STAFF RELATIONS & NEGOTIATIONS
7150	SUPERINTENDENT
7180	PUBLIC INFORMATION
7190	AUDIT - EXTERNAL
7200	OTHER GENERAL ADMINISTRATION
7210	GENERAL ADMINISTRATIVE COST TRANSFERS (INDIRECT COSTS)
7300	FINANCIAL SERVICES
7400	PERSONNEL / HUMAN RESOURCES SERVICES
7490	ERGONOMICS
7500	WAREHOUSE
7540	WAREHOUSING & DISTRIBUTION
7600	FACILITIES DEPARTMENT
7700	DATA PROCESSING SERVICES
8100	GROUNDS

**NATOMAS UNIFIED SCHOOL DISTRICT
FUNCTION (NUMERICAL)**

CODE	DESCRIPTION
8110	MAINTENANCE
8200	OPERATIONS
8300	SECURITY
8400	FACILTIES USE
8500	FACILITIES ACQUISITION AND CONSTRUCTION
8700	FACILITIES RENTS AND LEASES
9100	DEBT SERVICES
9200	TRANSFERS BETWEEN AGENCIES
9300	INTERFUND TRANSFERS

**NATOMAS UNIFIED SCHOOL DISTRICT
FUNCTION (ALPHA)**

CODE	DESCRIPTION
7190	AUDIT - EXTERNAL
7110	BOARD
3130	CHILD WELFARE AND ATTENDANCE
5000	COMMUNITY SERVICES
2130	CURRICULUM DEVELOPMENT
7700	DATA PROCESSING SERVICES
9100	DEBT SERVICES
7490	ERGONOMICS
8500	FACILITIES ACQUISITION AND CONSTRUCTION
7600	FACILITIES DEPARTMENT
8700	FACILITIES RENTS AND LEASES
8400	FACILITIES USE
1050	FIELD TRIPS
7300	FINANCIAL SERVICES
3700	FOOD SERVICES
7210	GENERAL ADMINISTRATIVE COST TRANSFERS (INDIRECT COSTS)
8100	GROUNDS
3110	GUIDANCE AND COUNSELING SERVICES
3140	HEALTH SERVICES
1000	INSTRUCTION - CLASSROOM
2420	INSTRUCTIONAL LIBRARY, MEDIA, AND TECHNOLOGY
2120	INSTRUCTIONAL RESEARCH
2140	INSTRUCTIONAL STAFF DEVELOPMENT
2110	INSTRUCTIONAL SUPERVISION
9300	INTERFUND TRANSFERS
8110	MAINTENANCE
1181	NON-PUBLIC AGENCIES
1180	NON-PUBLIC SCHOOLS
8200	OPERATIONS
4900	OTHER ANCILLARY SERVICES
5900	OTHER COMMUNITY SERVICES
7200	OTHER GENERAL ADMINISTRATION
2490	OTHER INSTRUCTIONAL RESOURCES
3900	OTHER PUPIL SERVICES (I.E. ATTENDANCE CENTER)
2495	PARENT PARTICIPATION
7400	PERSONNEL / HUMAN RESOURCES SERVICES
3120	PSYCHOLOGICAL SERVICES
7180	PUBLIC INFORMATION
3160	PUPIL TESTING
3600	PUPIL TRANSPORTATION
0000	REVENUES, BALANCE SHEET
2700	SCHOOL ADMINISTRATION
4100	SCHOOL SPONSORED CO-CURRICULAR
4200	SCHOOL SPONSORED ATHLETICS
8300	SECURITY

**NATOMAS UNIFIED SCHOOL DISTRICT
FUNCTION (ALPHA)**

CODE	DESCRIPTION
1190	SPECIAL EDUCATION: OTHER SPECIALIZED (I.E. SPEECH, THERAPIST, SPECIALISTS)
1120	SPECIAL EDUCATION: RESOURCE SPECIALIST INSTRUCTION (RSP)
1110	SPECIAL EDUCATION: SEPARATE CLASSES (SDC)
1130	SPECIAL EDUCATION: SUPPLEMENTAL AIDS & SERV IN REG CLASS
7120	STAFF RELATIONS & NEGOTIATIONS
7150	SUPERINTENDENT
2100	SUPERVISION OF INSTRUCTION
9200	TRANSFERS BETWEEN AGENCIES
7500	WAREHOUSE
7540	WAREHOUSING & DISTRIBUTION

**NATOMAS UNIFIED SCHOOL DISTRICT
BUDGET RESPONSIBILITY (LOCAL OPTION 1)**

CODE	DESCRIPTION	BUDGET MANAGER
000	UNDESIGNATED	
101	BOARD/SUPERINTENDENT	Chris Evans
102	ASSOCIATE SUPERINTENDENT / CAO	
103	DEPUTY SUPERINTENDENT	Javetta Cleveland
104	EXEC. DIRECTOR	Rick Messer
105	ASSISTANT SUPERINTENDENT	Shea Borges
106	ASSISTANT SUPERINTENDENT	Carol Swanson
107	DIRECTOR	Michele Hamilton
108	CATEGORICAL MANAGER	Corrie Buckmaster
110	DIRECTOR	AJ Giersch
112	DIRECTOR, COMMUNICATIONS	Deidra Powell
113	EXECUTIVE DIRECTOR	Shea Borges
115	AMERICAN LAKES PRINCIPAL	Tom Dickinson
116	BANNON CREEK PRINCIPAL	Suzen Holtemann
117	JEFFERSON PRINCIPAL	Danisha Keeler
118	NATOMAS PARK PRINCIPAL	Nou Vang
119	TWO RIVERS PRINCIPAL	Colleen Perry
120	WITTER RANCH PRINCIPAL	Patrick Birdsong
121	H. ALLEN HIGHT ELEM PRINCIPAL	Andrea Mitchell
122	HERON PRINCIPAL	Amy Whitten
123	VIRTUAL ACADEMY K-8	Esther Perez
130	PASO VERDE PRINCIPAL	Heather Gohn
131	NATOMAS MIDDLE SCH PRINCIPAL	Marcel Baker
135	NATOMAS HIGH SCHOOL PRINCIPAL	Scott Pitts
136	INDERKUM HIGH SCHOOL PRINCIPAL	Lori "Grace" Strickland
139	DISCOVERY HIGH SCHOOL PRINCIPAL	Laurelle Mathison
146	DIRECTOR, BUDGET/ACCTG	Mehdi Tazi
147	TRANSPORTATION	Doug Orr
148	MAINTENANCE & OPERATIONS	Doug Orr
149	DIRECTOR, R & D	Rachelle Cypher
150	DIRECTOR OF NUTRITION SVS & WHSE	Vince Caguin
151	DIRECTOR, FAC./STRG PLNG	Jennifer Mellor
152	DIRECTOR, BUDGET/ACCTG	Mehdi Tazi
153	CAO GENERAL	Corrie Buckmaster
154	ASSISTANT SUPERINTENDENT	Daniel Motherspaw
155	ASSISTANT SUPERINTENDENT	Carol Swanson
156	JOEY'S FOOD LOCKER	Maria Plowman
157	EXECUTIVE DIRECTOR	Corrie Buckmaster
158	SITE STIPENDS	Mehdi Tazi
159	EXEC. DIRECTOR	Rick Messer
160	ASSISTANT SUPERINTENDENT	Barbara Schiffner
162	DEPUTY SUPERINTENDENT	Bill Young
163	COORDINATOR	Elisa Van Horn
164	SELPA	Carol Swanson
166	NTA RELEASE TIME (Position Control)	
168	HEALTH CLINIC	Carol Swanson
173	LEROY GREENE ACADEMY PRINCIPAL	David Rodriguez
176	NP3 HS PRINCIPAL	Tom Rutten
178	NP3 MS PRINCIPAL	Tom Rutten
179	NP3 ES PRINCIPAL	Tom Rutten
180	CONSTITUENT & CUSTOMER SERVICES (CCS)	Heidi Lattuada
199	SUBSTITUTE SICK LEAVE	
700	EMERGENCY OPERATIONS	
910	IB PROGRAMS	Tonja Jarrell
911	AP PROGRAMS	Daniel Motherspaw

**NATOMAS UNIFIED SCHOOL DISTRICT
TYPE CODE (LOCAL OPTION 1)**

CODE	DESCRIPTION
Facility Project Codes	
201	Star Academy - New Facility
202	Westlake Charter - New Facility
203	Fencing Phase I
204	Fencing Phase II
205	Fencing Phase III
206	Fencing Phase IV
207	Security Cameras
208	Bannon Creek Upgrades
209	Bannon Creek Portables
210	Exterior Lighting Upgrade
211	Leroy Greene - New Classroom Building
212	Heron - New Classroom Building
213	Heron Portables
214	NHS - Science Lab Upgrade
215	TRE - Library Upgrade
216	West Lakeside-New School
217	Discovery High Renovations
218	Natomas Park - New Classroom Building
219	Hardscape Repairs
220	Leroy Greene Portable
221	Health Clinic
222	NP3
223	Site Acquisition - Potential Site
224	NCS Soffit Repairs
225	Buses/Service Vehicles
226	Interim Paso Verde
227	New Campus Paso Verde
228	Security Fencing V
229	DSA Closeout NCS/PACT
230	Ptoject Managemnet Measure D
231	86 Acres
232	Playground Improvements
233	Reporting for Capital Projects
234	Dark Fiber for SCOE IT interface
235	Jefferson Modernization
236	CTE Building Trades
237	Joel's Kitchen Rennovation
238	2015 COP
239	Leroy Green Academy

**NATOMAS UNIFIED SCHOOL DISTRICT
TYPE CODE (LOCAL OPTION 1)**

CODE	DESCRIPTION
240	Prop 39 Projects
241	Natomas Crossing Parcel 72
242	Witter Ranch Hardscape
243	American Lakes Temp Portables
244	Natomas Hight Portable Removal
245	Bannon Creek Portable Removal
246	Inderkum HS Weight Room
247	NHS Weight Room
248	IHS Public Safety Pathway
249	K-8 Conversion Scoping
250	IHS Athletic Field
251	IHS Relocatable Classrooms 2019
252	Paso Verde Interim Relocatables
253	American Lakes K-8 Conversion
254	Bannon Creek K-8 Conversion
255	Jefferson K-8 Conversion
256	NHS Dance Room
257	NP3 Elementary Lease
258	WRE Hardscape
259	Inderkum / City New Market Drive
260	NCS Loan Repay
261	NUSD Aquatic Center
262	NHS Track & Field
263	NHS Music Production
264	NP3 Elementary New Building
265	Northpointe
266	Cafeteria Tables 2020
267	IHS Softball Complex
268	HALO
269	Virtual Academy
270	VOIP Phone System
271	E. Commerce Upgrades
272	Cosmetology Program
273	Arena Reuse Property

Special Grants

900	CISP - UOP Contract
901	NNTMA GRANT
903	Every 15 Minutes
904	ADULT ED CONSORTIUM PLAN GRANT

**NATOMAS UNIFIED SCHOOL DISTRICT
TYPE CODE (LOCAL OPTION 1)**

CODE	DESCRIPTION
906	ACTION CIVICS SCHOOL GRANT (NHS)
908	PASO VERDE GRANT
909	HR GRANT

**NATOMAS UNIFIED SCHOOL DISTRICT
TYPE CODE (LOCAL OPTION 2)**

CODE	DESCRIPTION
000	UNDESIGNATED
020	VISA Card
030	Teacher Supply money
033	Student Worker
040	SPED Low Incidence
041	SPED Prog Specialist
042	SPED Out-of-Home Care
060	Negotiations
062	Grievances
063	UnfaiLaboPractices
064	Interviews
097	Underspending
098	Gen.-Contra Account
099	Gen.-Proj. Underspending
100	Cert-Unspecified/Regular
102	Cert-Stipends
103	Cert-Extra Time
104	Cert-Subs (Alloc. Leave)
108	Cert-Class Overages
111	STRS Penalties and Interest
160	Cert-Negotiations
162	Cert-Grievances
163	Cert-UnfaiLaboPractices
164	Cert-Interviews
196	Cert-Release Time
197	Cert-Vacant Positions
198	Cert-Contra Account
199	Cert-Proj. Underspending
200	Class-Unspecified/Regular
201	Class-Overtime
202	Class-Stipends
203	Class-Extra Time
204	Class-Subs (Alloc. Leave)
207	Class-Out of Class Pay
209	Class-Vacation Buyout
212	Class-Facility Use
226	Class-Staff Development
260	Class-Negotiations

**NATOMAS UNIFIED SCHOOL DISTRICT
TYPE CODE (LOCAL OPTION 2)**

CODE	DESCRIPTION
262	Class-Grievances
263	Class-UnfaiLaboPractices
264	Class-Interviews
297	Class-Vacant Positions
298	Class-Contra Account
299	Class-Proj. Underspending
300	Mgmt Cert-Unspecified/Regular
397	Mgmt Cert-Vacant Positions
398	Mgmt Cert-Contra Account
399	Mgmt Cert-Proj. Underspending
400	Mgmt Class-Unspecified/Regular
497	Mgmt Class-Vacant Positions
498	Mgmt Class-Contra Account
499	Mgmt Class-Proj. Underspending
500	Conf-Regular
501	Conf-Overtime
503	Conf-Extra Time
504	Conf-Subs (Alloc. Leave)
507	Conf-Out of Class Pay
509	Conf-Vacation Buyout
597	Conf-Vacant Positions
598	Conf-Contra Account
599	Conf-Proj. Underspending
600	Unrep Cert-Regular
700	Unrep Class-Regular
703	Unrep Class-Extra Time
704	Unrep Class-Subs (Alloc. Leave)
707	Unrep Class-Out of Class Pay
709	Unrep Class-Vacation Buyout
712	Technology Plan
713	CSPP Jefferson Start up
718	DIR
720	K-12Virtual Academy
756	WASC
797	Unrep Class-Vacant Positions
798	Unrep Class-Contra Account
799	Unrep Class-Proj. Underspending

**NATOMAS UNIFIED SCHOOL DISTRICT
TYPE CODE (LOCAL OPTION 2)
Facilities Project Codes**

CODE	DESCRIPTION
800	NEW CONSTRUCTION PROJECT
801	Fac. Master Plan
802	COP 1998
803	SURVEILLANCE SYSTEM
804	COP 2000
805	Lighting Upgrades
806	GO BONDS 2001
807	2002 GOB
808	GOB 2002, SERIES 2004B
809	2005 COP
810	NHS REIMBURSEMENT MONEY
811	NHS BUILDING K
812	NHS STADIUM LIGHTS
813	SURPLUS PROPERTY
814	FEDERAL RENOVATION PROG (FRP)
815	DISTRICT EDUCATION CENTER
816	PARKING LOT
817	Pending Growth Projects
818	MODERNIZATION
819	BANNON CREEK PARKING LOT EXPAN
820	PHASE 2
821	Admin Bldg Projects
822	FACILITIES RENTALS
823	2003 COP
824	GYMNASIUM
825	DISTRICT CORPORATION YARD
826	2006 GOB, SERIES 2007
827	REHABILITATION
828	K-8 CONVERSION
829	FACILITIES EXTENSION
830	GASLINE
832	Educational Labs
834	Hardscape Repairs
835	PRIMARY RELOCATABLES
836	SECONDARY RELOCATABLES
837	PLAYGROUND EQUIP
838	KITCHEN EXPANSION
839	LIBRARY
840	SOLAR TUBES
841	SWIMMING POOL

**NATOMAS UNIFIED SCHOOL DISTRICT
TYPE CODE (LOCAL OPTION 2)
Facilities Project Codes**

<u>CODE</u>	<u>DESCRIPTION</u>
842	WIRELESS LABS
843	TECH REFRESH PROGRAM
844	ATHLETIC FIELDS
845	SAFE ROUTES TO SCHOOL(CHARRET)
846	SHADE STRUCTURES
847	PRESCHOOL FACILITIES
850	ES Portables-2nd project in FY
851	New Classroom Bldgs
852	Classroom Upgrades
853	DSA Closeouts
854	Monopoles

**NATOMAS UNIFIED SCHOOL DISTRICT
TYPE CODE (LOCAL OPTION 2)
LCAP Action Codes (By Loc 2)**

CODE	DESCRIPTION	ACTION NUMBER
901	AP/IB Support	1.01
902	AP/IB Exam Fees	1.02
903	ERWC	1.04
904	Tech Refresh-Students and Staff	1.05
905	EL TOSAS	1.06
906	EL Supports	1.07
908	Williams Act	1.08
909	Former EIA	1.10
910	PK-12 MTSS	1.11
912	C&CS	2.01
913	Summer School	2.02
914	AP Capstone	2.03
915	Credit Recovery	2.04
916	Foster Coordination	2.05
917	PK-12 IB	2.06
918	GATE	2.07
919	Seal of Biliteracy	2.08
920	ACT	2.11
921	PSAT Support	2.11
923	Career Pathways	2.09
924	Adult Ed	2.10
928	Parent Survey	3.01
929	Parent U	3.02
931	Parent Portal and SIS	3.03
932	DELAC	3.04
933	CCS	3.05
934	Redesignation	3.06
935	Intervention Support	4.01
936	Promise Program/Community Day	4.02
938	Restorative Justice	4.03
939	Music Programs	4.05
940	Elementary Athletics	4.06
941	FIT	4.07
942	Transportation	4.08
943	Foster Support	4.09
944	Secondary Music	4.10
945	Student Perspective	4.11
948	Add'tl Health Assistants	4.14
949	MTSS Psych	4.15
950	After School Programs	4.17

**NATOMAS UNIFIED SCHOOL DISTRICT
TYPE CODE (LOCAL OPTION 2)
LCAP Action Codes (By Loc 2)**

CODE	DESCRIPTION	ACTION NUMBER
951	IYT	4.16
954	IT Support	5.01
956	Induction	5.04
957	PAR	5.05
958	HR Software Programs	5.06
959	Diversity Recruitment	5.07
960	English Learner	1.06
961	Communications and Family Engagement De	3.08
961	Multilingual Family Engagement	3.11
962	Websites and Social Media	3.09
963	SS Textbook Adoption	1.09
964	On Track to College	3.10
966	Aspiring Leaders	5.08
967	Campus Safety	4.17
969	Systemic Professional Development	5.09
970	18-Month Plan	1.13, 4.20
971	ELA and Math Literacy	1.15
972	Disparity and Disproportionality PD	1.17, 5.09
973	School Yard Rap	3.13
974	Ethnic Studies and Cultural Responsiveness	1.14
975	State Seal of Civic Engagement	1.12
976	Instructional Technology PD	1.16
977	Mentoring for Female Students	4.13
978	Social Emotional and Culture Climate Survey	4.04
979	Social Emotional Assessments	4.18

**NATOMAS UNIFIED SCHOOL DISTRICT
TYPE CODE (LOCAL OPTION 2)
LCAP Action Codes (By Action No.)**

CODE	DESCRIPTION	ACTION NUMBER
901	AP/IB Support	1.01
902	AP/IB Exam Fees	1.02
903	ERWC	1.04
904	Tech Refresh-Students and Staff	1.05
905	EL TOSAS	1.06
960	English Learner	1.06
906	EL Supports	1.07
908	Williams Act	1.08
963	SS Textbook Adoption	1.09
909	Former EIA	1.10
910	PK-12 MTSS	1.11
975	State Seal of Civic Engagement	1.12
970	18-Month Plan	1.13, 4.20
974	Ethnic Studies and Cultural Responsiveness	1.14
971	ELA and Math Literacy	1.15
976	Instructional Technology PD	1.16
972	Disparity and Disproportionality PD	1.17, 5.09
912	C&CS	2.01
913	Summer School	2.02
914	AP Capstone	2.03
915	Credit Recovery	2.04
916	Foster Coordination	2.05
917	PK-12 IB	2.06
918	GATE	2.07
919	Seal of Biliteracy	2.08
923	Career Pathways	2.09
924	Adult Ed	2.10
920	ACT	2.11
921	PSAT Support	2.11
928	Parent Survey	3.01
929	Parent U	3.02
931	Parent Portal and SIS	3.03
932	DELAC	3.04
933	CCS	3.05
934	Redesignation	3.06
961	Communications and Family Engagement De	3.08
962	Websites and Social Media	3.09
964	On Track to College	3.10
961	Multilingual Family Engagement	3.11
973	School Yard Rap	3.13

NATOMAS UNIFIED SCHOOL DISTRICT
TYPE CODE (LOCAL OPTION 2)
LCAP Action Codes (By Action No.)

CODE	DESCRIPTION	ACTION NUMBER
935	Intervention Support	4.01
936	Promise Program/Community Day	4.02
938	Restorative Justice	4.03
978	Social Emotional and Culture Climate Survey	4.04
939	Music Programs	4.05
940	Elementary Athletics	4.06
941	FIT	4.07
942	Transportation	4.08
943	Foster Support	4.09
944	Secondary Music	4.10
945	Student Perspective	4.11
977	Mentoring for Female Students	4.13
948	Add'tl Health Assistants	4.14
949	MTSS Psych	4.15
951	IYT	4.16
950	After School Programs	4.17
967	Campus Safety	4.17
979	Social Emotional Assessments	4.18